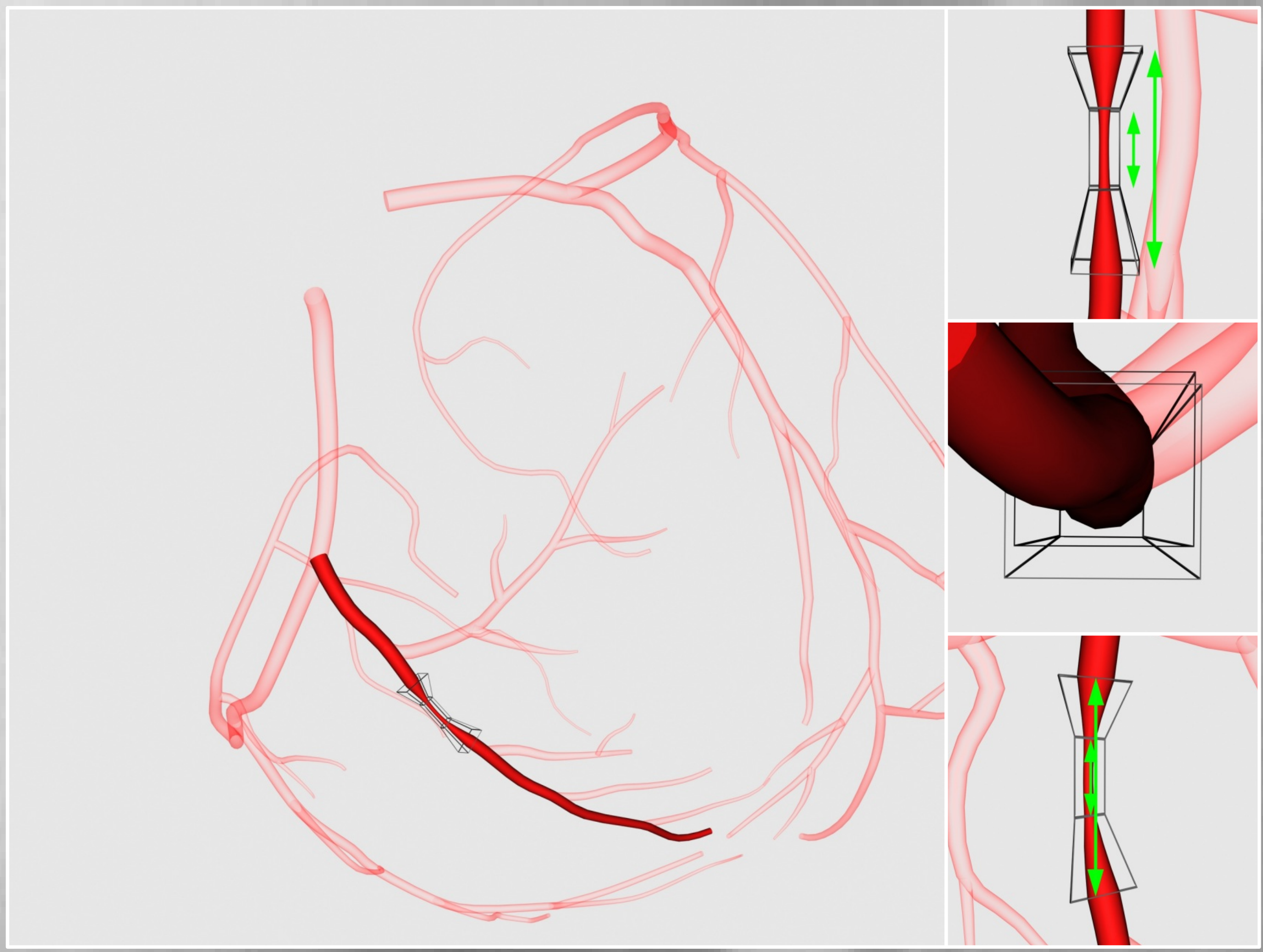
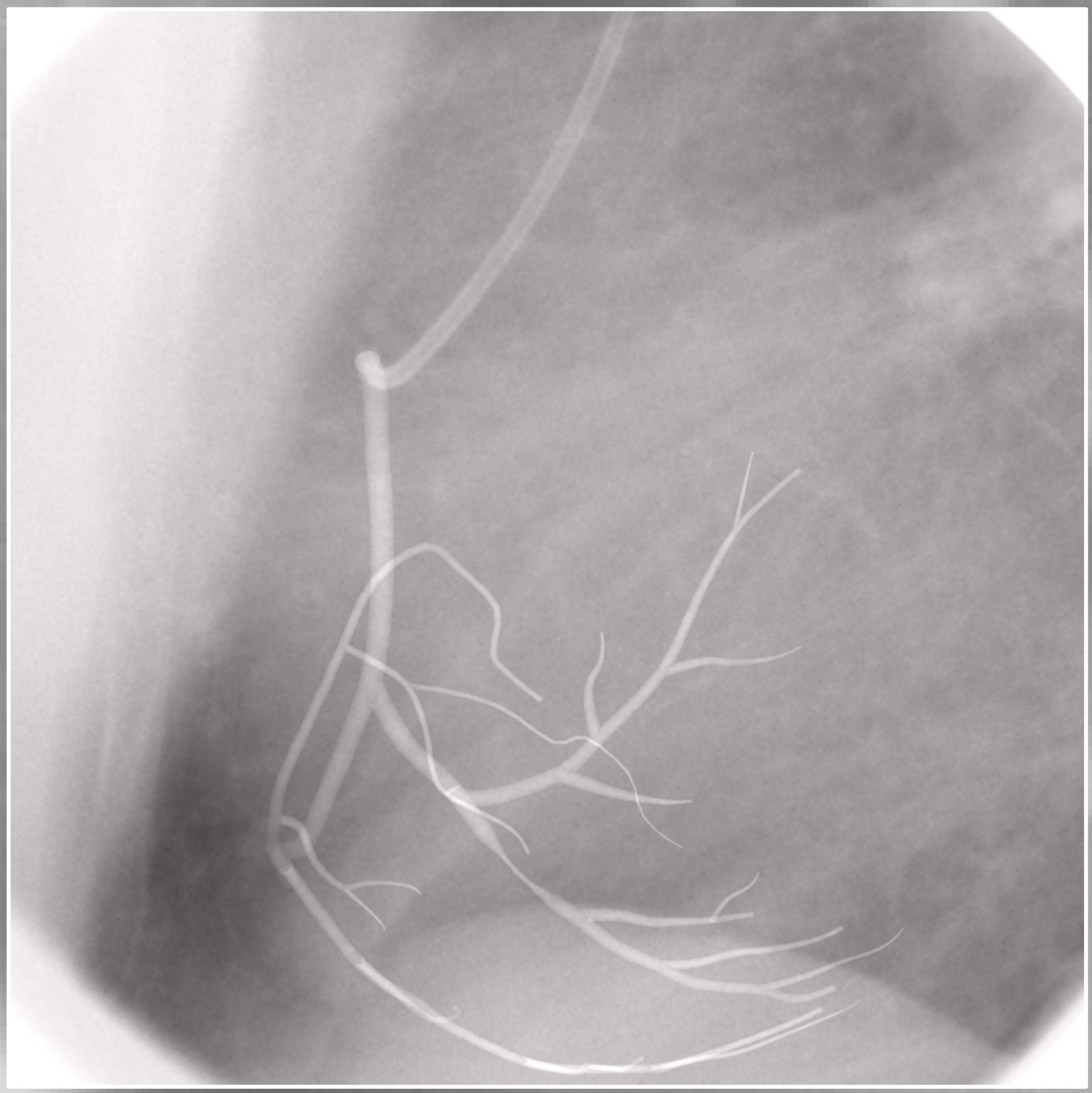


Virtual Coronary Cineangiography

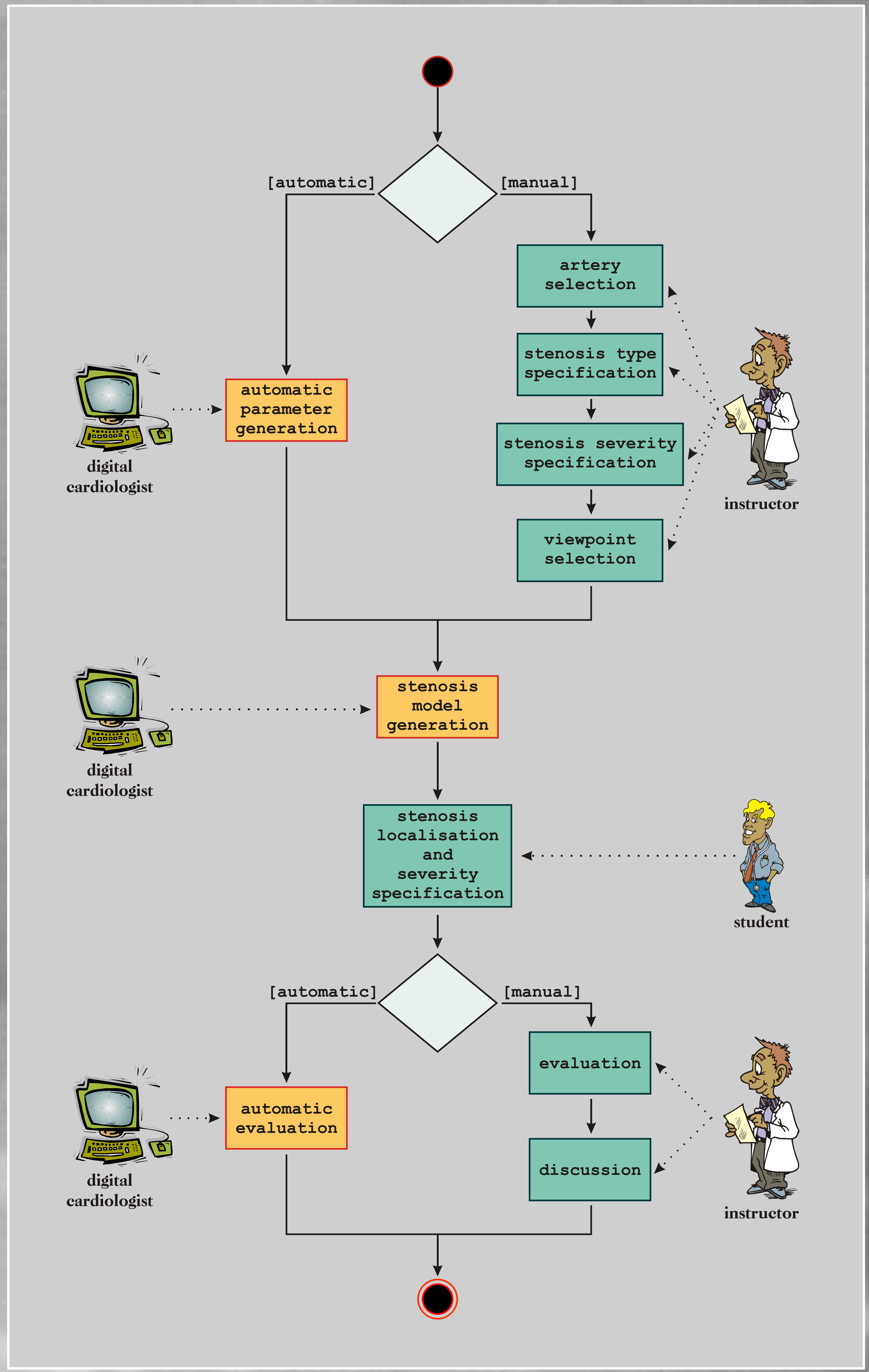
iztok LEBAR BAJEC
 primož TRUNK
 nikolaj ZIMIC
 damjan OSELI



instructors user interface
 the instructor selects the artery that is to be affected by stenosis. The artery is shown non transparently. By displacement of a wireframe box they select the stenosis location. The stenosis severity is defined by means of two lengths and a factor. The two lengths represent the total length of the region affected by stenosis and the effective stenosis length, while the factor represents the artery diameter reduction.



students user interface
 the student searches the simulated x-ray image for features that enable them to make a hypothesis about a possible stenosis. They try to localize the stenosis and recognize its apparent severity. In the follow-up discussion the instructor and the student discuss the case, by rotating the full three dimensional model.



use-case
 flow chart diagram describing the medical student use-case scenario.